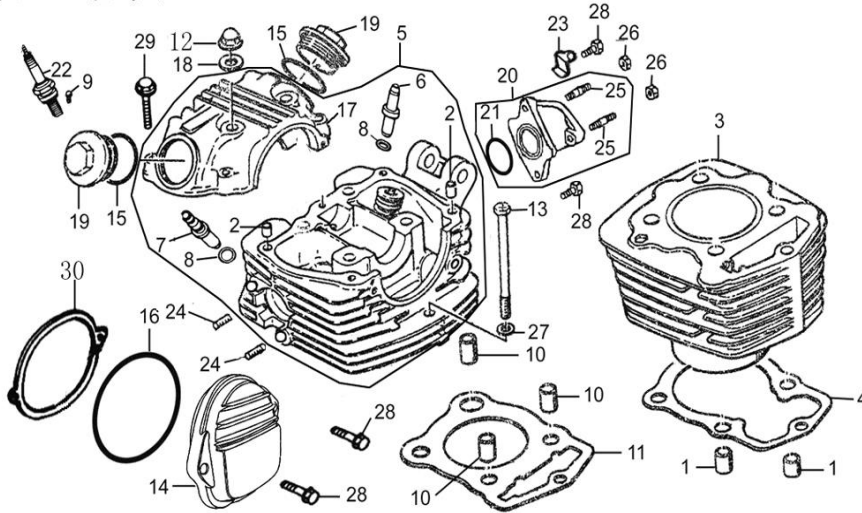
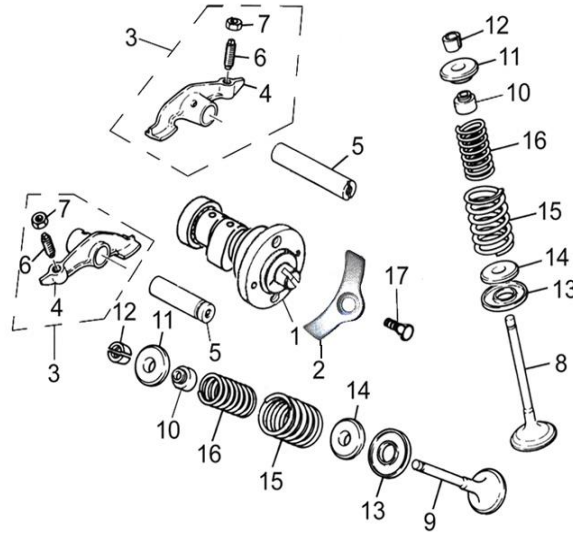


E-1 气缸、气缸头 CYLINDER BLOCK & CYLINDER HEAD



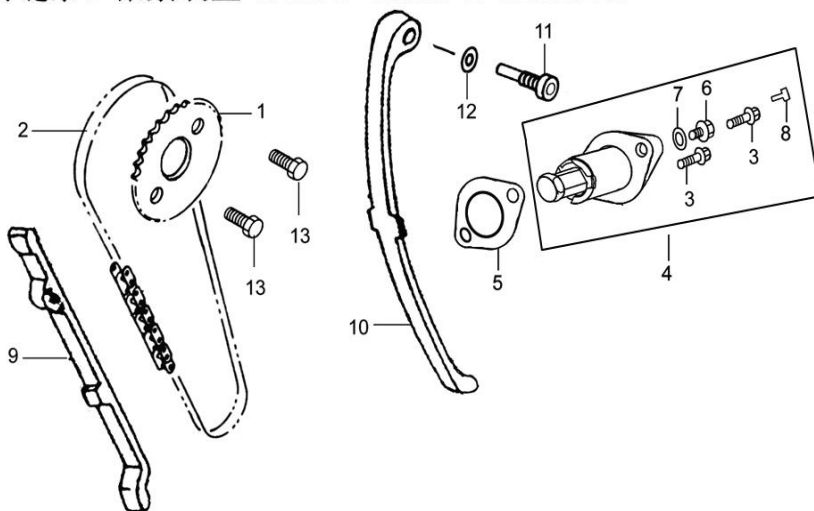
Id	PartNo	Description	Unit			
E01-01	1711011118	Set Pin (Φ10×14)	PC			
E01-02	1711011318	Set Pin (Φ8×14)	PC			
E01-03	1L11012110	Cylinder Block	PC			
E01-04	1L11012121	Gasket	PC			
E01-05	1L11012210	Cylinder Head Assy	PC			
E01-06	1L11012214	Intake Valve Guide	PC			
E01-07	1L11012215	Exhaust Valve Guide	PC			
E01-08	1712012216	O-Ring (Φ10×1.6)	PC			
E01-09	1711012217	Rubber Plug	PC			
E01-10	1712012218	Locating Pin (Φ10×20)	PC			
E01-11	1L11012220	Gasket	PC			
E01-12	GB/T923	Cap Nut M8	PC			
E01-13	1L11012237	Bolt M6×117	PC			
E01-14	1L11012242	Cylinder Head Cover LH	PC			
E01-15	1712022462	O-Ring (Φ35×3)	PC			
E01-16	1711012247	O-Ring (Φ75×Φ2.5)	PC			
E01-17	1711012311	Cylinder Head Cover	PC			
E01-18	1711012345	Washer	PC			
E01-19	1712015463	Engine Oil Gauze Cover	PC			
E01-20	1L11017310	Inlet Pipe Set	PC			
E01-21	1712017321	O-Ring (Φ33.5×Φ3)	PC			
E01-22	1712034210	Spark Plug D8TC	PC			
E01-23	1712034931	Ignition Coil Wire Clamp	PC			
E01-24	GB/T900	Stud M6×35	PC			
E01-25	GB/T900	Bolt M6×25	PC			
E01-26	GB/T6170	Nut M6	PC			
E01-27	GB/T97.1	Copper Washer 6	PC			
E01-28	GB/T16674.1	Bolt M6×22	PC			
E01-29	GB/T16674.1	Bolt M6×35	PC			
E01-30	1711012245	Cylinder Head Cover Gas	PC			

E-2 凸轮轴、气门 CAMSHAFT & VALVES



Id	PartNo	Description	Unit
E02-01	1L11014100	Camshaft Assy	PC
E02-02	1711014133	Lock Washer	PC
E02-03	1711014410	Rocker Arm Assy	PC
E02-04	1711014411	Rocker	PC
E02-05	1711014413	Rocker Shaft	PC
E02-06	1712014415	Valve Clearance Adjuster	PC
E02-07	1712014416	Locking Nut	PC
E02-08	1L11014710	Intake Valve	PC
E02-09	1L11014720	Exhaust Valve	PC
E02-10	1712014730	Valve Stem Oil Seal	PC
E02-11	1711014751	Valve Spring Upper Seat	PC
E02-12	1711014752	Valve Clamp	PC
E02-13	1711014753	Valve Spring Outer Seat	PC
E02-14	1711014754	Valve Spring Inner Seat	PC
E02-15	1711014755	Valve Outer Spring	PC
E02-16	1711014756	Valve Inner Spring	PC
E02-17	GB/T819.1	Screw M6×16	PC

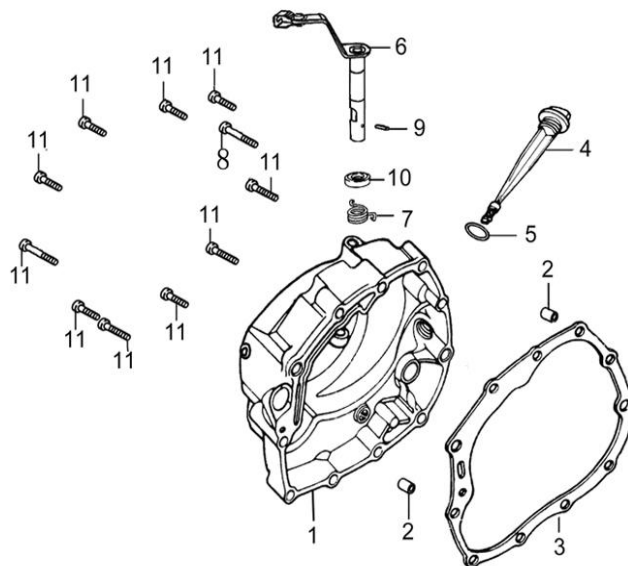
E-3 正时链条、张紧装置 TIMING CHAIN & TENSINER



Id	PartNo	Description	Unit
----	--------	-------------	------

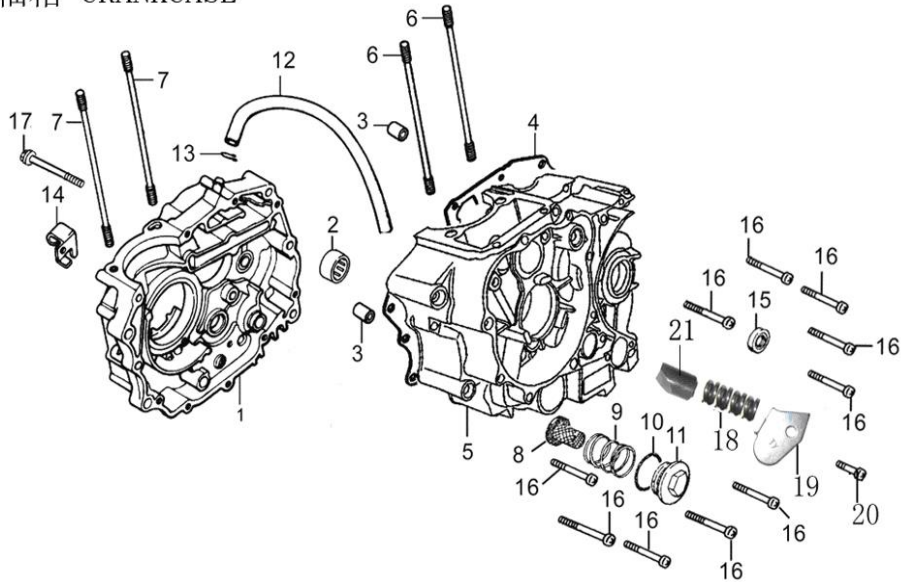
E03-01	1L11014321	Driven Timing Sprocke	PC			
E03-02	1L11014350	Timing Chain	PC			
E03-03	GB/T16674. 1	Bolt M6×25	PC			
E03-04	1L11014500	Tensioner	PC			
E03-05	1L11014519	Tensioner Gasket	PC			
E03-06	1L11014527	Adjusting Screw	PC			
E03-07	1L11014528	O-Ring	PC			
E03-08	1L11014596	Stop Clip	PC			
E03-09	1L11014610	Guide Plate	PC			
E03-10	1L11014650	Tension Plate	PC			
E03-11	1711014661	Screw	PC			
E03-12	1711014662	Washer 8	PC			
E03-13	GB/T5783	Bolt M6×10	PC			

E-4 右曲轴箱盖 RIGHT CRANKCASE COVER



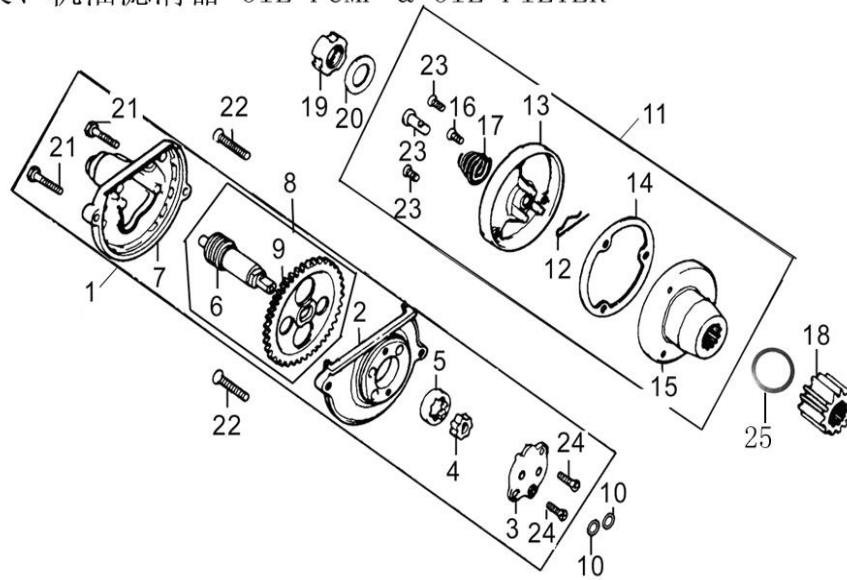
Id	PartNo	Description	Unit			
E04-01	1L11011310	Right Crankcase Cover	PC			
E04-02	1712011318	Set Pin (Φ8×14)	PC			
E04-03	1L11011319	Gasket	PC			
E04-04	1712015611	Dipstick	PC			
E04-05	1712015612	O-Ring (Φ18×3)	PC			
E04-06	1712022810	Operating Lever, Clutch	PC			
E04-07	1712022821	Spring	PC			
E04-08	GB/T16674. 1	Screw M6×50	PC			
E04-09	1711022825	Dowel Pin	PC			
E04-10	1711022840	Oil Seal (Φ12×22×5)	PC			
E04-11	GB/T16674. 1	Screw M6×40	PC			

E-5 曲轴箱 CRANKCASE



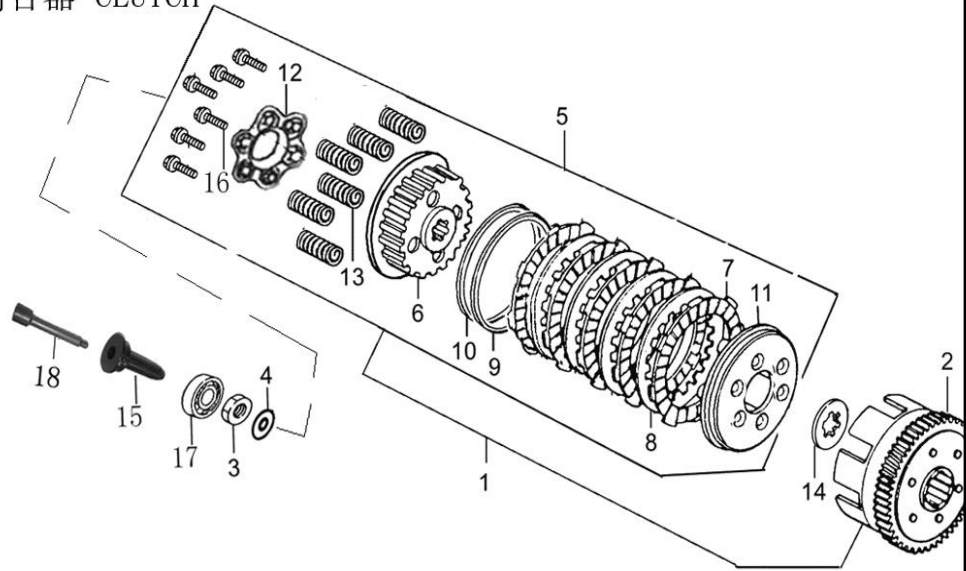
	Id	PartNo	Description	Unit			
	E05-01	1L11011110	Right Crankcase	PC			
	E05-02	GB/T290	Needle Bearing HK 2110	PC			
	E05-03	1712011118	Set Pin (φ10×14)	PC			
	E05-04	1L11011119	Gasket	PC			
	E05-05	1L11011210	Left Crankcase	PC			
	E05-06	1L11012342	Stud A (M8×235)	PC			
	E05-07	1L11012343	Stud B (M8×222)	PC			
	E05-08	1712015450	Oil Gauze Filter Comp.	PC			
	E05-09	1712015461	Spring	PC			
	E05-10	1712015462	O-ring (φ35.5×φ3)	PC			
	E05-11	1712015463	Oil Gauze Filter Cover	PC			
	E05-12	1712020152	Exhaust Pipe	PC			
	E05-13	1712020153	Clip	PC			
	E05-14	1L11022824	Clutch Cable Adjusting S	PC			
	E05-15	1712024190	Oil seal φ14×φ28×7	PC			
	E05-16	GB/T16674.1	Bolt M6×50	PC			
	E05-17	GB/T16674.1	Bolt M6×60	PC			
	E05-18	1L11011233	Spring	PC			
	E05-19	1711014360	Timing Chain Limit Plate	PC			
	E05-20	GB/T16674.1	Bolt M6×20	PC			
	E05-21	1L11011231	Pin-Keeping Block	PC			

E-6 机油泵、机油滤清器 OIL PUMP & OIL FILTER



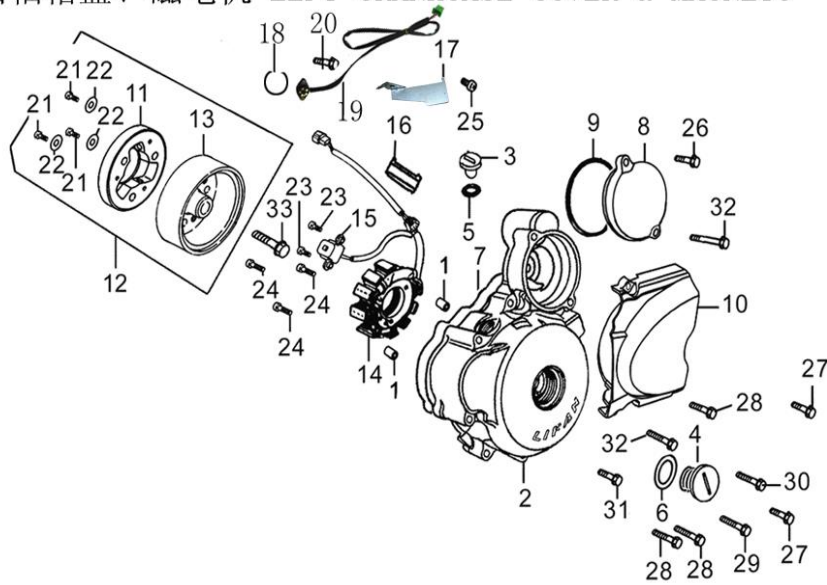
Id	PartNo	Description	Unit			
E06-01	1L11015100	Oil Pump Assy	PC			
E06-02	1L11015111	Pump Body	PC			
E06-03	1L11015112	Pump Cover	PC			
E06-04	1L11015114	Inner Rotator	PC			
E06-05	1L11015115	Outer Rotator	PC			
E06-06	1L11015116	Pump Shaft	PC			
E06-07	1L11015119	Gear Hood	PC			
E06-08	1L11015120	Driven Gear Set	PC			
E06-09	1L11015121	Driven Gear	PC			
E06-10	1712015131	O-Ring ($\phi 9.4 \times \phi 2.4$)	PC			
E06-11	1712015410	Filter Assy	SET			
E06-12	1712015413	Limit Pin	PC			
E06-13	1712015414	Filter Cover	PC			
E06-14	1712015415	Gasket	PC			
E06-15	1712015420	Oil Filter Rotater	PC			
E06-16	1712015431	Oil Pipe	PC			
E06-17	1712015432	Spring	PC			
E06-18	1L11022621	Primary Drive Gear	PC			
E06-19	1712022631	Nut	PC			
E06-20	1L11022632	Thrust-Washer	PC			
E06-21	GB/T5782	Bolt M5×20	PC			
E06-22	GB/T819.1	Screw M6×30	PC			
E06-23	GB/T819.1	Screw M5×12	PC			
E06-24	GB/T820	Screw M4×12	PC			
E06-25	xxxxxxxxxx	Washer	PC			

E-7 离合器 CLUTCH



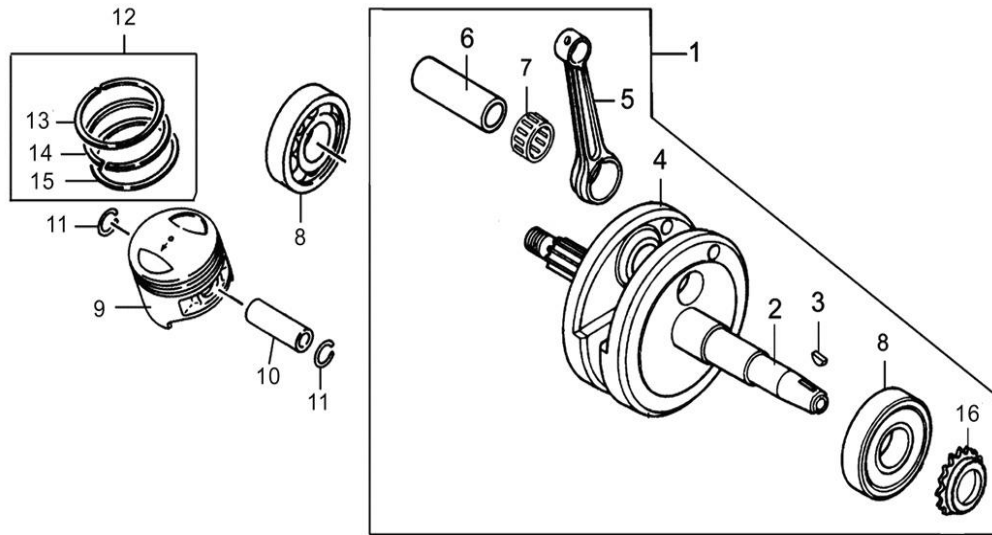
Id	PartNo	Description	Unit			
E07-01	1L11022100	Clutch Body Assy	PC			
E07-02	1L11022110	Drive Disc Comp.	PC			
E07-03	1711022151	Tightening Nut	PC			
E07-04	1711022152	Thrust Washer	PC			
E07-05	1L11022310	Clutch Driven Disc Assy	PC			
E07-06	1L11022320	Driven Disc Comp.	PC			
E07-07	1L11022330	Clutch Drive Plate Comp	PC			
E07-08	1L11022341	Driven Plate	PC			
E07-09	1L11022342	Release Spring	PC			
E07-10	1L11022343	Retainer Disc Spring	PC			
E07-11	1L11022351	Location Plate	PC			
E07-12	1L11022361	End Cover	PC			
E07-13	1L11022371	Spring	PC			
E07-14	1L11022372	Spline Washer	PC			
E07-15	1L11022861	Push Rod	PC			
E07-16	GB/T5783	Bolt M6×22	PC			
E07-17	GB/T276	Bearing 16003 (φ17×φ30)	PC			
E07-18	1L11022871	Rod	PC			

E-8 左曲轴箱盖、磁电机 LEFT CRANKCASE COVER & MAGNETO



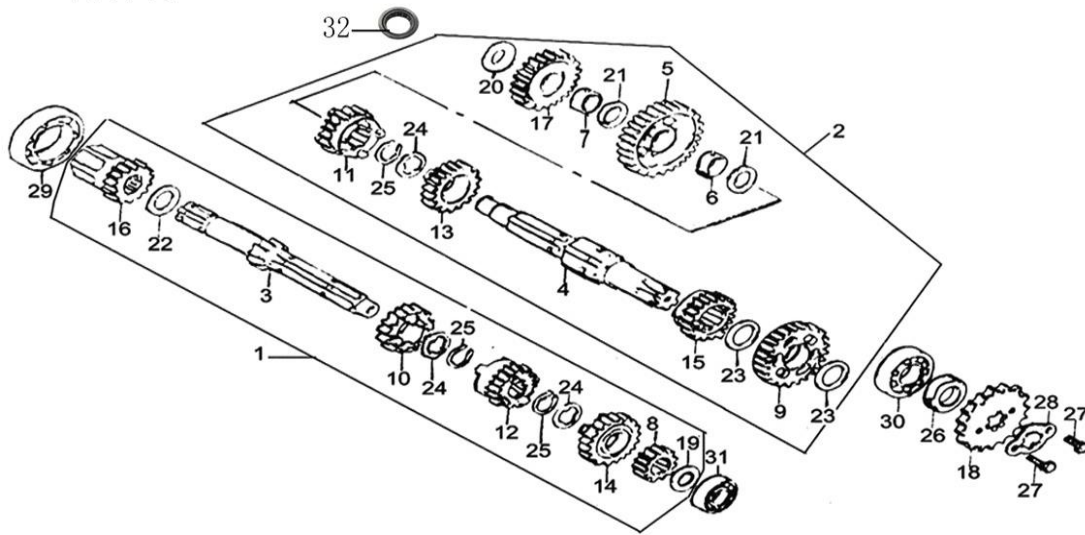
Id	PartNo	Description	Unit			
E08-01	1712011318	Dowel Pin (Φ8×12)	PC			
E08-02	1L11011411	Left Crankcase Cover	PC			
E08-03	1L11011412	Plug Watch Hole	PC			
E08-04	1L11011413	Plug	PC			
E08-05	1L11011414	O-Ring (Φ13.8×Φ2.5)	PC			
E08-06	1L11011415	O-Ring (Φ27.5×Φ2.5)	PC			
E08-07	1L11011419	Left Crankcase Cover Gas	PC			
E08-08	1L11011421	Idler Cover	PC			
E08-09	1L11011422	O-Ring (Φ63×Φ3)	PC			
E08-10	1L11011451	Rear-Left Cover	PC			
E08-11	1L11028110	Starting Clutch Assy	PC			
E08-12	1L11031102	Rotor With Starting Clu	PC			
E08-13	1L11031110	Rotor Magneto	PC			
E08-14	1L11031210	Magneto Stator Assy	PC			
E08-15	1L11031280	Induced Coil	PC			
E08-16	1L11031911	Wire Clamp	PC			
E08-17	1L11031922	Wire Clamp	PC			
E08-18	1L11035723	Gear Indicator Contacti	PC			
E08-19	1L11035730	Wire Harness	PC			
E08-20	GB/T16674.1	Screw 4×18	PC			
E08-21	GB/T70.1	Screw M8×30	PC			
E08-22	GB/T 93	Spring Washer 8	PC			
E08-23	GB/T16674.1	Bolt M5×16	PC			
E08-24	GB/T16674.1	Bolt M5×30	PC			
E08-25	GB/T16674.1	Bolt M6×12	PC			
E08-26	GB/T16674.1	Bolt M6×20	PC			
E08-27	GB/T16674.1	Bolt M6×25	PC			
E08-28	GB/T16674.1	Bolt M6×40	PC			
E08-29	GB/T16674.1	Bolt M6×45	PC			
E08-30	GB/T16674.1	Bolt M6×50	PC			
E08-31	GB/T16674.1	Bolt M6×60	PC			
E08-32	GB/T16674.1	Bolt M6×70	PC			
E08-33	GB/T16674.1	Bolt M10×45	PC			

E-9 曲轴、活塞 CRANKSHAFT-PISTON



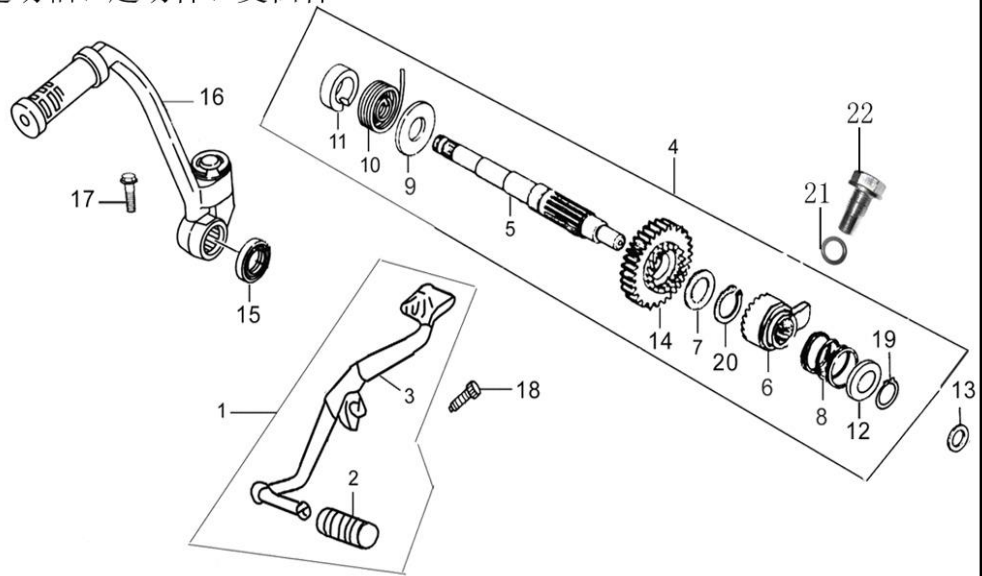
Id	PartNo	Description	Unit			
E09-01	1L11013100	Crankshaft Assy	PC			
E09-02	1L11013111	Left Crankshaft	PC			
E09-03	1712013118	Woodruff Key	PC			
E09-04	1L11013121	Right Crankshaft	PC			
E09-05	1L11013131	Tie Ro	PC			
E09-06	1711013140	Crankshaft Pin	PC			
E09-07	1L11013150	Roller Bearing	PC			
E09-08	1L11013170	Bearing	PC			
E09-09	1L11013211	Piston	PC			
E09-10	1711013221	Piston Pin	PC			
E09-11	1711013222	Circlip	PC			
E09-12	1L11013300	Piston Ring Set	SET			
E09-13	1L11013311	Piston Ring No. 1	PC			
E09-14	1L11013312	Piston Ring No. 2	PC			
E09-15	1L11013320	Oil Ring 3-Piece	PC			
E09-16	1L11014311	Timing Sprocket Drive	PC			

E-10 传动装置 TRANSMISSION DEVICE



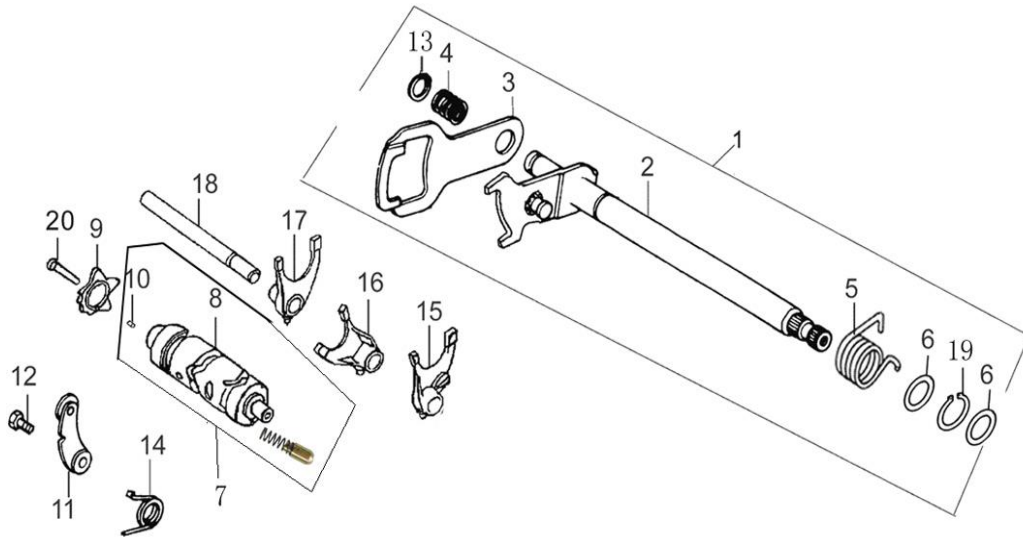
Id	PartNo	Description	Unit			
E10-01	1L11023600	Mainshaft Assy	PC			
E10-02	1L11023700	Countershaft Assy	PC			
E10-03	1L11023611	Mainshaft	PC			
E10-04	1L11023771	Countershaft	PC			
E10-05	1L11023710	Countershaft First Gear	PC			
E10-06	1L11023712	Countershaft 1st Gear Bush	PC			
E10-07	1L11027223	Starting Mid-Gear Bush	PC			
E10-08	1L11023621	Mainshaft Second Gear	PC			
E10-09	1L11023720	Countershaft Second Gear	PC			
E10-10	1L11023631	Mainshaft Third Gear	PC			
E10-11	1L11023731	Countershaft Third Gear	PC			
E10-12	1L11023641	Mainshaft Fourth Gear	PC			
E10-13	1L11023741	Countershaft Fourth Gear	PC			
E10-14	1L11023651	Mainshaft Fifth Gear	PC			
E10-15	1L11023751	Countershaft Fifth Gear	PC			
E10-16	1L11027230	Starting Driven Gear Cover	PC			
E10-17	1L11027220	Starting Mid-Gear Comp.	PC			
E10-18	1712022711	Output Sprocket	PC			
E10-19	1L11023674	Mainshaft Washer	PC			
E10-20	1L11027224	Starting Mid-Gear Washer	PC			
E10-21	1L11023773	Countershaft Washer	PC			
E10-22	1L11027233	Washer	PC			
E10-23	1L11023774	Countershaft Washer II	PC			
E10-24	1L11023675	Mainshaft Spline Washer	PC			
E10-25	1L11023672	Circlip	PC			
E10-26	1L11023790	Oil Seal 20x34x7	PC			
E10-27	GB/T5783	Bolt M6x10	PC			
E10-28	1712022712	Sprocket Locating Plate	PC			
E10-29	GB/T276	Bearing 6006	PC			
E10-30	GB/T276	Bearing 6204	PC			
E10-31	GB/T276	Bearing 6202	PC			
E10-32	GB/T290	Needle Bearing NK 1512	PC			

E-11 起动轴、起动杆、变档杆STARTING SHAFT STARTING ARM & GEARSHIFT



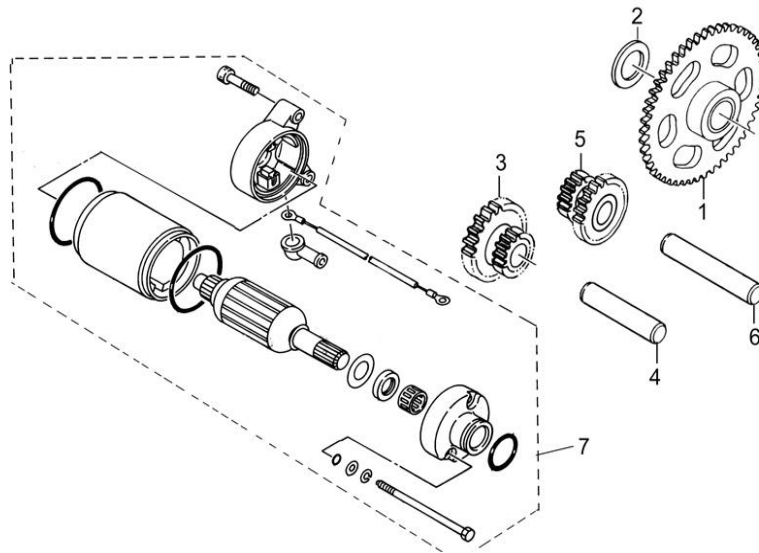
Id	PartNo	Description	Unit			
E11-01	1712024700	Gearshift Pedal Assy	PC			
E11-02	1712024711	Gearshift Pedal Boot	PC			
E11-03	1712024720	Gearshift Rod Weldment	PC			
E11-04	1L11027100	Starting Shaft Assy	PC			
E11-05	1L11027111	Starting Shaft	PC			
E11-06	1L11027113	Ratchet	PC			
E11-07	1711027114	Washer No. 1	PC			
E11-08	1L11027115	Spring	PC			
E11-09	1L11027117	Spring Seat	PC			
E11-10	1L11027118	Reset Spring	PC			
E11-11	1711027119	Sleeve	PC			
E11-12	1711027121	Spring Ratchet Seat	PC			
E11-13	1711027141	Washer No. 2	PC			
E11-14	1L11027151	Starting Gear	PC			
E11-15	1711027190	Starting Shaft Oil Seal	PC			
E11-16	1711027700	Starting Arm Assy	PC			
E11-17	GB/T5783	Bolt M8×40	PC			
E11-18	GB/T5783	Bolt M6×20	PC			
E11-19	GB/T894.1	Circlip 16	PC			
E11-20	GB/T894.1	Circlip 20	PC			
E11-21	1711027135	Starting Shaft O-Ring 1	PC			
E11-22	1711027134	Starting Shaft Screw	PC			

E-12 变档机构 GEARSHIFT DEVICE



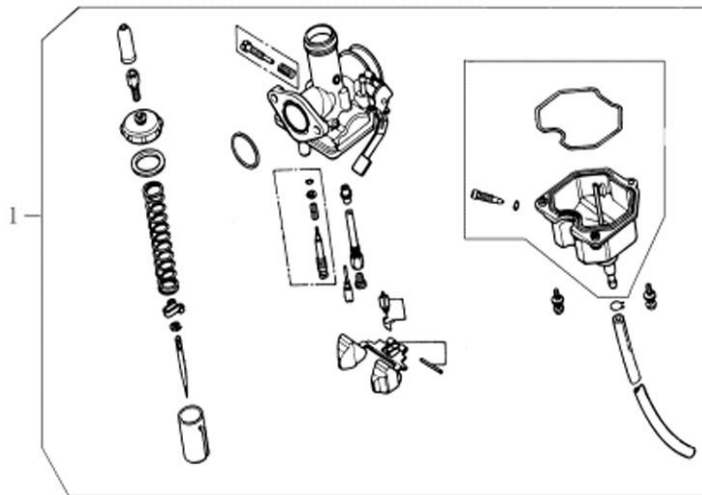
Id	PartNo	Description	Unit			
E12-01	1L11024100	Gearshift Shaft Assy.	PC			
E12-02	1L11024110	Shaft Combination	PC			
E12-03	1L11024121	Gearshift Controlling P	PC			
E12-04	1L11024122	Spring	PC			
E12-05	1L11024123	Reset Spring	PC			
E12-06	1L11024124	Washer (Φ14×Φ20×0.5	PC			
E12-07	1L11024210	Gearshift Cam Comp.	PC			
E12-08	1L11024211	Drum	PC			
E12-09	1L11024221	Cam	PC			
E12-10	1711024222	Set Pin B4×10	PC			
E12-11	1L11024310	Limit Block	PC			
E12-12	1L11024321	Bolt	PC			
E12-13	GB/T894.1	Circlip 12	PC			
E12-14	1L11024323	Spring	PC			
E12-15	1L11024411	Fork No. 1	PC			
E12-16	1L11024412	Fork No. 2	PC			
E12-17	1L11024413	Fork No. 3	PC			
E12-18	1711024421	Fork Shaft	PC			
E12-19	GB/T894.1	Circlip 14	PC			
E12-20	GB/T5783	Bolt M6×30	PC			

E-13 起动电机STARTING MOTOR



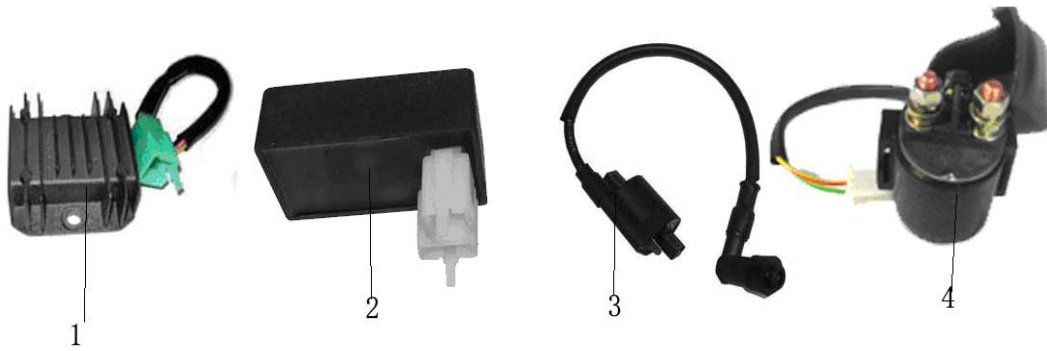
Id	PartNo	Description	Unit			
E13-01	1L11028150	Gear Assy.	PC			
E13-02	1L11028172	Washer (Φ20×Φ30×5.0)	PC			
E13-03	1L11028311	Dual- Gears (I)	PC			
E13-04	1L11028321	Dual-Gears Shaft (I)	PC			
E13-05	1L11028331	Dual- Gears (II)	PC			
E13-06	1L11028341	Dual-Gears Shaft (II)	PC			
E13-07	1L11034700	Starting Motor	PC			

E-14 化油器 CARBURETOR



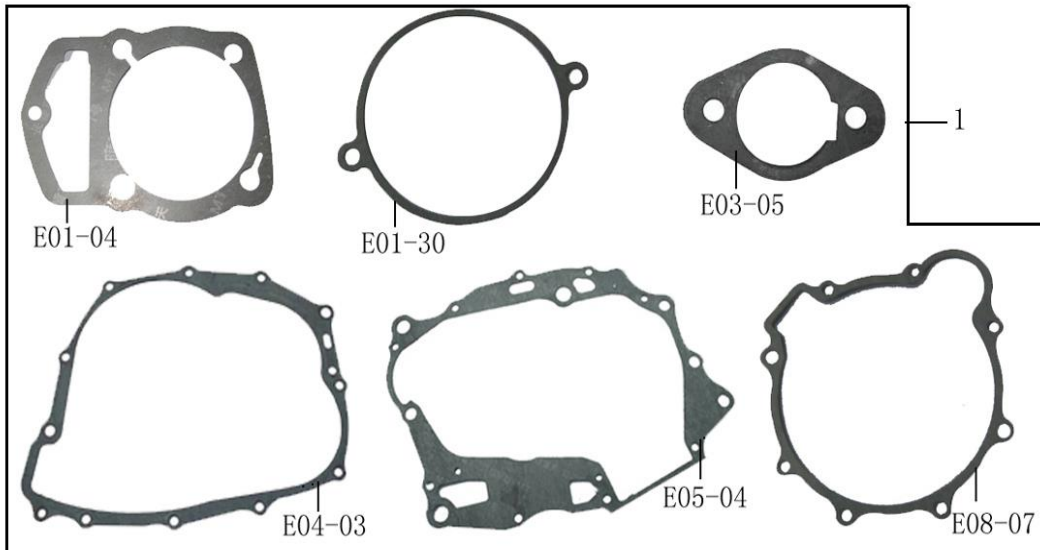
Id	PartNo	Description	Unit			
E14-01	1L11016100	Carburetor Assy	PC			

E-15 电器 ELECTRIC ELEMENTS



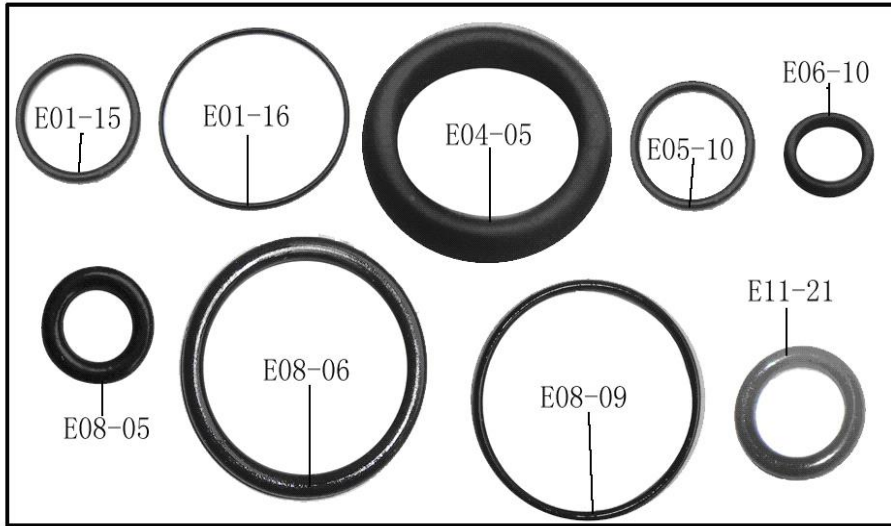
	Id	PartNo	Description	Unit			
	E15-01	1712031600	Voltage Regulator	PC			
	E15-02	1712034400	Ignition Controller	PC			
	E15-03	1712034500	Ignition Coil	PC			
	E15-04	1712034600	Start Relay	PC			

E-16 全套纸垫 A FULL SET OF GASKETS



	Id	PartNo	Description	Unit			
	E16-01	1L110QT001	A Full Set Of Gaskets	SET			

E-17全套O形圈 A FULL SET OF O-RINGS



Id	PartNo	Description	Unit			
E17-01	1L110QT002	A Full Set Of O-Rings	SET			

E-18全套油封 A FULL SET OF OIL SEALS



Id	PartNo	Description	Unit			
E18-01	1L110QT003	A Full Set Of Oil Seals	SET			

E-19全套轴承 A FULL SET OF BEARINGS



Id	PartNo	Description	Unit		
E19-01	1L110QT004	A Full Set Of Bearings	SET		

